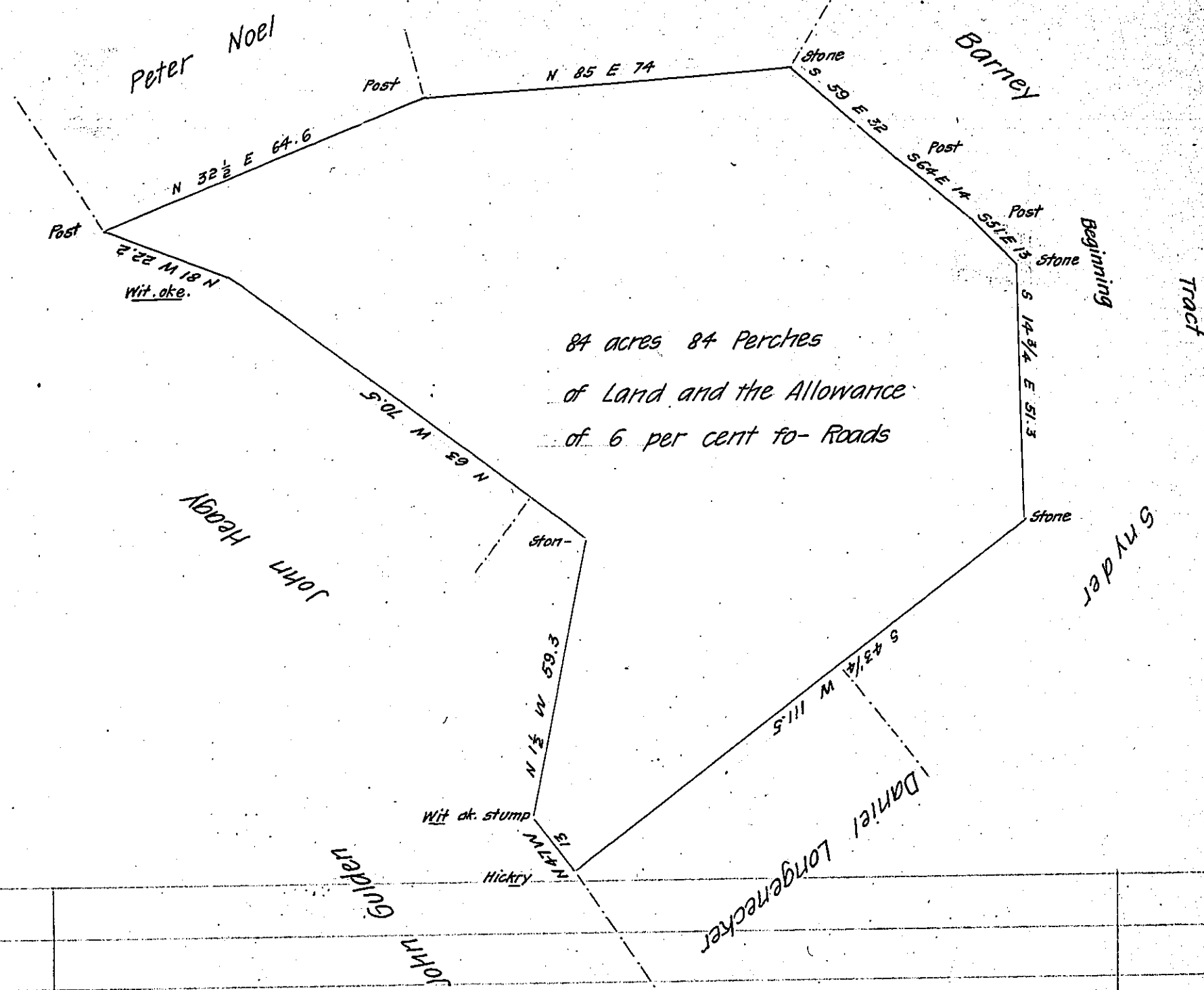


FORM No. 1.

Part of the original Christian Winner



84 acres 84 Perches  
of Land and the Allowance  
of 6 per cent to Roads

Draught of a tract of land situate partly in Strabane and partly in Butler Township in the County of Adams containing eighty four acres and eighty four Perches and the Allowance of Six per Cent for Roads. Surveyed for Jacob Klepper & Emanuel Beidler Peter Noel John H. Dull Emanuel Noel David Boyer the 16<sup>th</sup> day of May A.D. 1870 Being a part of a larger Tract of 299 1/2 acres and Allowance original surveyed in pursuance of a warrant granted to Joshua Russel dated the 28<sup>th</sup> day of March A.D. 1775

Jesse D. Keller

Jacob M. Campbell

County Surveyor

Surveyor General

{ is Caled Stone Judy

IN TESTIMONY that the above is a copy of the original remaining on file in the Department of Internal Affairs of Pennsylvania, made conformably to an Act of Assembly approved the 16th day of February, 1833, I have hereunto set my Hand and caused the Seal of said Department to be affixed at Harrisburg, this twenty first day of November 1906

*Asaac P. Brown*  
Secretary of Internal Affairs.